

ROTENSO[®]
Live better





Fresh

Wall-mounted air conditioner

Rotenso Fresh presents an innovative solution for users who prioritize their health. This model incorporates advanced technology to introduce fresh air into the room.

The fresh mode utilizes an additional ventilation duct, included in the kit, along with an extra fan to bring in fresh air from the outside.

The air is filtered before being released through additional disc located at the panel top.





FRESH



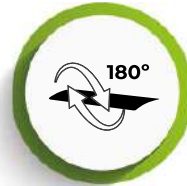
Fresh air
supply



E12 class
EPA



3 x UV lamp



Louver
180°



Comfortable
Windless supply



Heating at low
outdoor temp.
down to -22°C



The users can enjoy attractive illumination of the extending disc and front panel or disable the backlight completely depending on preference.

Simple shape, calm white front panel decorated with silver trimming perfectly fits minimalist interiors.

The Fresh air conditioning system offers a comfortable experience with its wide-angle louvre and Windless technology.

This unit is particularly recommended for rooms lacking efficient ventilation, thanks to its Fresh system (fresh air intake), up to three built-in LED UV lamps, and the air filter.



Fresh air supply

The Fresh system allows for the intake of fresh air at up to 35 m³/h. The outside air is distributed by an additional insulated ventilation duct (50 mm in diameter and 2 m long), included in the kit, along with a fan that can be smoothly adjusted through three speed settings.



Three built-in UV lamps

The unit incorporates three built-in iAIR LED UV-C lamps to effectively eliminate and prevent the proliferation of microorganisms, bacteria, fungi, and toxic substances, thus promoting healthier indoor air.



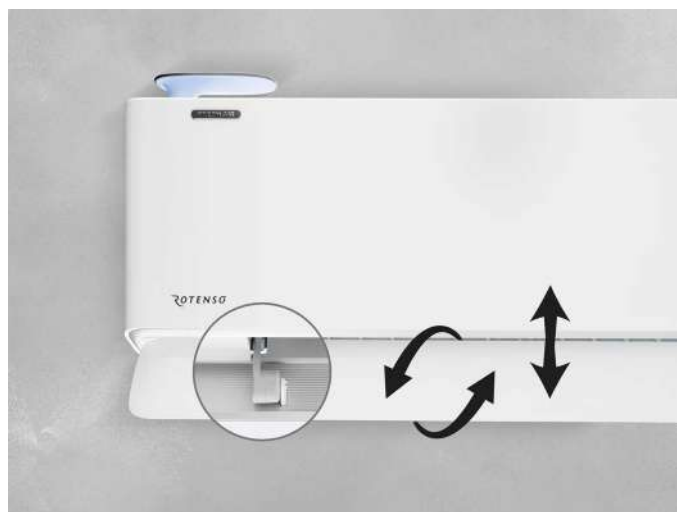
E12 class EPA fresh air filter

Before released into the room the fresh air is filtered by „E12“ EPA filter to improve air quality.



Comfortable **Windless supply**

The air conditioner equipped with the Windless technology releases air in a gentle and evenly dispersed stream through 1330 micro-perforations, achieving extremely low noise level of just 18 dB at the lowest fan speed.



Louvre 180°

Horizontal louvre working in two independent directions allows precise airflow within 180° vertical range.



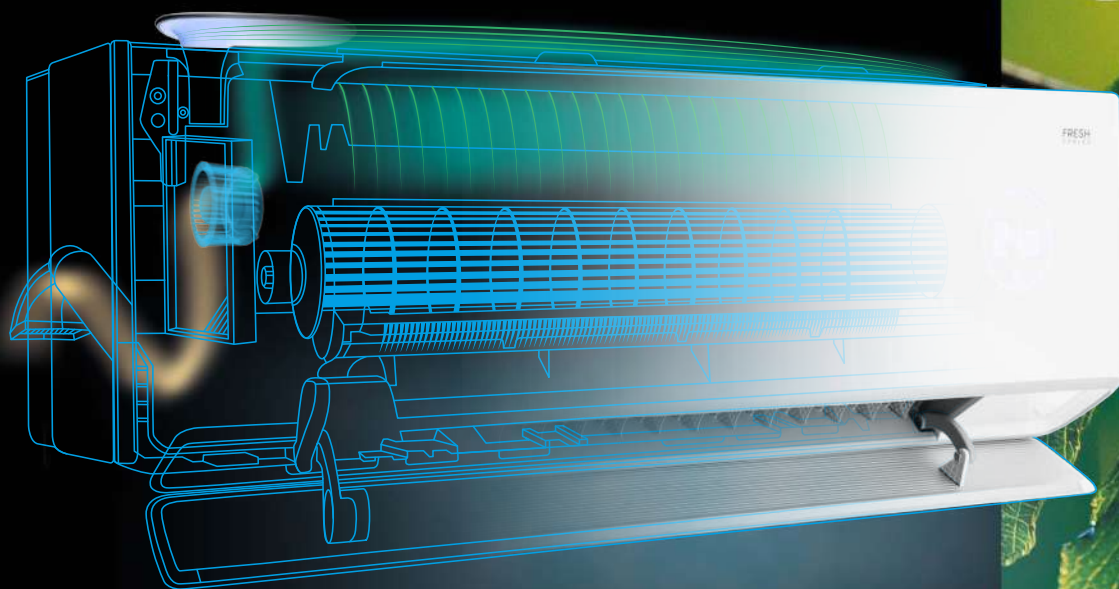
Heating at low outdoor temperature down to -22°C

The inverter technology and compressor crankcase heater ensure efficient operation of the air conditioner in heating mode, even at outside temperature as low as -22°C, with an SCOP of 4,6.

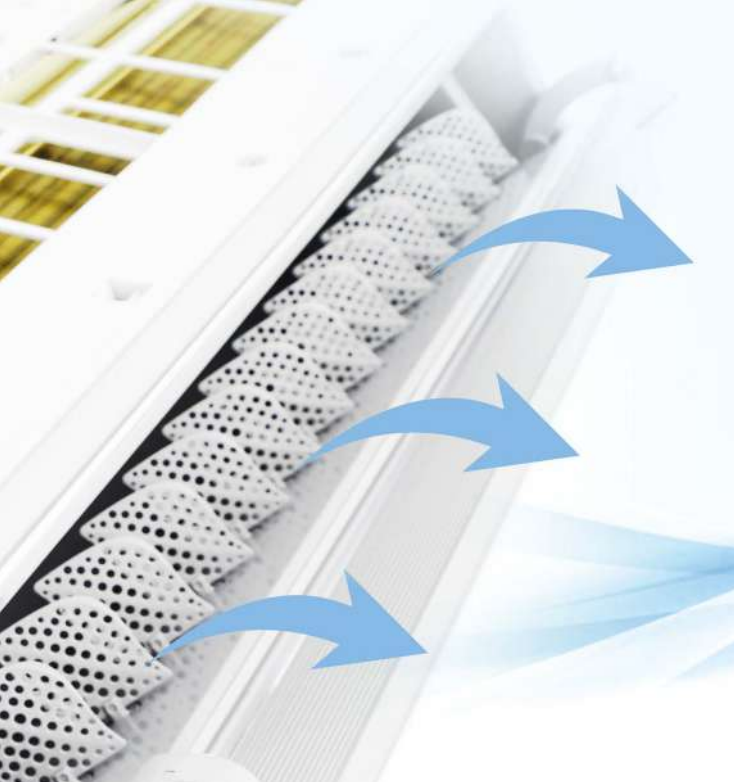


FRESH AIR

68



DIRECT INTAKE OF FRESH,
FILTERED, AND HUMIDIFIED AIR
FROM THE OUTSIDE



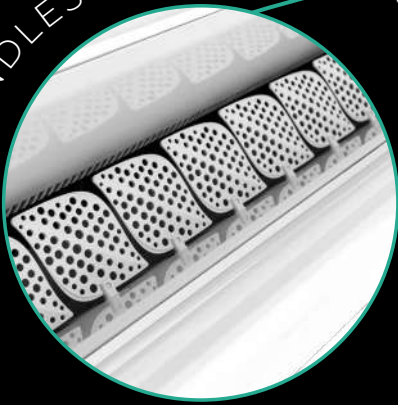
Silent operation

FRESH AIR DISC



69

WINDLESS SUPPLY



FRESH
MODERN
& PRACTICAL

LOUVRE 180°



With the innovative Fresh technology, the air conditioner provides proper air exchange and optimal indoor air quality in terms of both temperature and humidity.

It is an ideal solution for premises in buildings without mechanical ventilation, which may be lacking fresh air after thermal upgrades. The quality of the supplied air is further enhanced by the inclusion of 3 built-in LED UV lamps and an E12 EPA air filter.

FRESH
AIR
WINDLESS



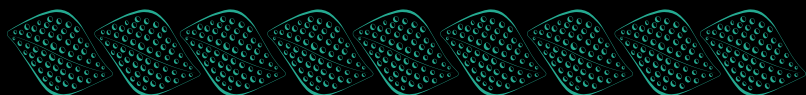
FRESH

with **180°**
AIR SUPPLY
and

WINDLESS
COMFORT

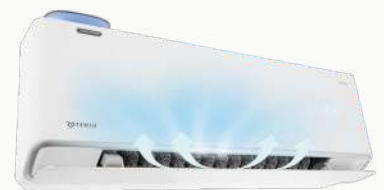
The Fresh air-conditioning system offers a comfortable experience with its 180° louvre and Windless technology, ensuring maximum dispersed cooled air release through 1330 micro-perforations.

The 180° louvre also provides users with extensive control of the airflow angle to achieve optimal thermal comfort.





LOUVRE
ADJUSTMENT
FOR ADDED
COMFORT

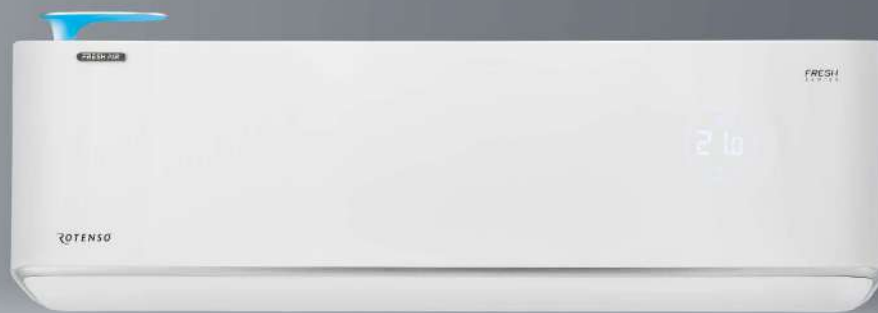


Fresh

3,5 kW

1:1
SINGLE

- SCOP 4,6
- Wi-Fi
- 22°C
- Compressor winding heating
- 4D
- Anti-corrosive gold fins
- 5 year WARRANTY
- PZH CERTIFICATE



Unit features

72



Digital DC Inverter SKY®



Automatic cleaning iAIR



Automatic purification iClean



Fresh air supply



UV lamp



Electrostatic HD iAIR filter



E12 class EPA filter



Super Silent eMOTO mode



Automatic 4D louvres



Louvre 180°



Windless eMOTO mode



Turbo eMOTO mode



Air supply eMOTO control system



Eco eMOTO mode



Wide-angle eMOTO air supply



SMART wi-fi



SMART twilight sensor ⁽¹⁾



SMART panel display ON/OFF



SMART Follow mode



Wireless remote control



SMART heating to 8°C



Louvre setting memory



Auto restart memory



Anti-corrosive gold fins



Compressor winding heating



Silence mode



Timer



Cooling at low outdoor temp. down to -15°C



Heating at low outdoor temp. down to -22°C



Double-sided condensate drainage



Self-diagnostics



Sleep mode



Energy optimization

1. Feature can be accessed via mobile app.

Technical specification

Model				Fresh 3,5 kW
Capacity	Cooling	Nom. (Min. - Max.)	W	3530 (1109-4423)
Rated input		Nom. (Min. - Max.)	W	921 (190-1510)
Operating current		Nom. (Min. - Max.)	A	4,0 (0,8-6,5)
Capacity	Heating	Nom. (Min. - Max.)	W	3900 (1008-4508)
Rated input		Nom. (Min. - Max.)	W	994 (192-1750)
Operating current		Nom. (Min. - Max.)	A	4,3 (0,8-7,6)
Reversible heat pump type				air-to-air
Design load in cooling mode			kW	3,6
SEER			W/W	8,5
Energy efficiency class, cooling				A+++
Annual electric energy consumption, cooling			kWh/a	148
Design load in heating mode (Tbiv -7°C)			kW	2,7
SCOP			W/W	4,6
Energy efficiency class, heating				A++
Annual electric energy consumption, heating			kWh/a	822
Dehumidification			l/h	1,2
Maximum energy consumption			W	1950
Maximum operating current			A	8,5
Indoor unit				FH35Xi
EAN product code				5905567600876
Fan speed	T / H / M / L / ML / S		rpm	1220 / 1070 / 900 / 780 / 700 / 600
Air flow	T / H / M / L / ML / S		m³/h	581 / 542 / 474 / 405 / 295 / 205
Sound pressure level	T / H / M / L / ML / S		dB(A)	41 / 37 / 32 / 24 / 21 / 18
Sound power level			dB(A)	55
Rated input			W	26
Operating current			A	0,1
Net dimensions	W × D × H		mm	960 × 198 × 316
Gross dimensions	W × D × H		mm	1035 × 360 × 390
Net weight / Gross weight			kg	13 / 15
Condensate drain			mm	16
Outdoor unit				FH35Xo
EAN product code				5905567600883
Fan speed	H / M / L		rpm	825 / 720 / 480
Maximum air flow			m³/h	2200
Sound pressure level			dB(A)	51
Sound power level			dB(A)	61
Net dimensions	W × D × H		mm	795 × 305 × 551
Gross dimensions	W × D × H		mm	835 × 328 × 575
Bracket spacing	W × D		(mm)	434 × 278
Net weight / Gross weight			kg	26,5 / 29,5
Refrigerant	Type			R32
	GWP			675
	≤ 5m		kg	0,8
			TCO ₂ eq	0,544
Charged > 5m			g/mb	12
Pipe connections	Liquid/Gas		mm (inches)	Φ6,35 / Φ9,52 (1/4" / 3/8")
Maximum installation length			m	25
Maximum height difference			m	10
Compressor type				Rotary DC
Type of outdoor unit power supply			V-Hz, Ø	220-240-50, 1f
Electrical protection			A	C10
Power cables: outdoor unit			pcs × mm²	3 × 1,5
Control and power cables: indoor unit - outdoor unit			pcs × mm²	4 × 1,5
Control and power cables: hiro unit - indoor unit			pcs × mm²	-
Indoor operating range (cooling / heating)			°C	16-32 / 0-30
Outdoor operating range (cooling / heating)			°C	-15-53 / -22-30
Compatible systems				
1:1 SINGLE				•
1:2 DUAL				
1:X MULTI				