

ROTENSO[®]
Live better





Nevo

Ducted air conditioner

The Nevo ducted air conditioner designed to be used with many applications. It helps you create efficient air conditioning system for various types of premises

With a pressure of up to 160 Pa and 10 available capacities ranging from 2,1 kW to 15,3 kW, the Rotenso Nevo is suitable for diverse settings, from residential buildings to large commercial establishments.

Its intelligent control system enhances user comfort and includes features such as a central controller with weekly programming, an alternate operation controller, a wireless remote control, and a SMART Wi-Fi modem.





NEVO



ESP up to
160 Pa



ON/OFF
remote output



Alarm
output



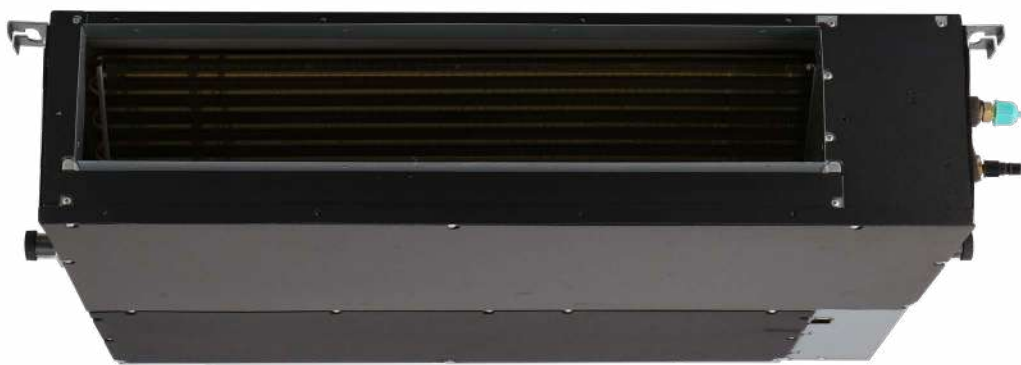
CAV
flow control



Heating at down
to -20°C

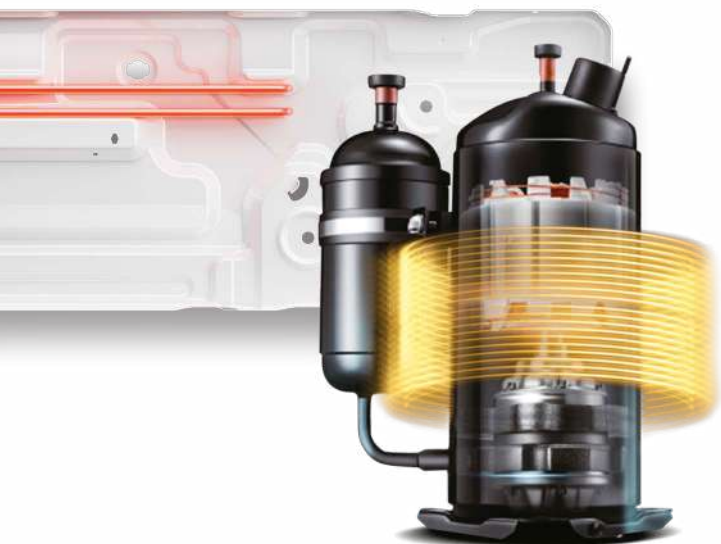


Winter
package



The Rotenso Nevo is compatible with various ventilation accessories, including anemostats, air grates, and extraction grates.

The unit's ability to accommodate multiple air vents ensures even air distribution to considerably far distance from the main unit.



Winter package

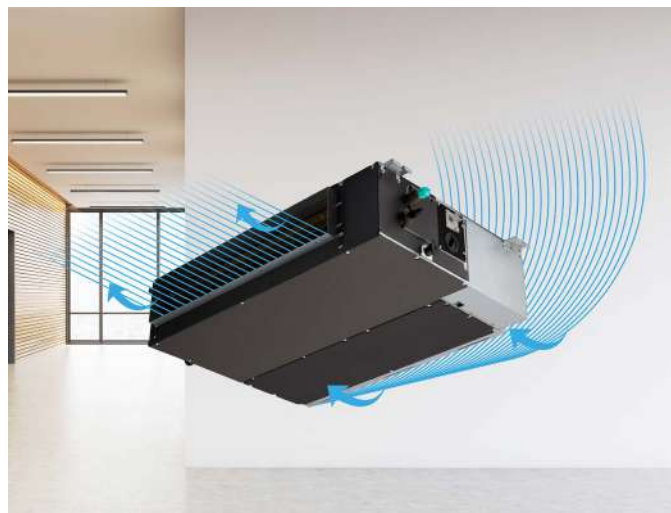
Highly efficient compressor combined with a drip tray heater and a compressor crankcase heater as standard components, commonly referred to as the year-round package, ensure consistent and reliable heating performance of the Rotenso air conditioners.

180



Heating at temperature as low as -20°C

These features ensure efficient operation and extend the lifespan of the unit, even in extreme weather conditions. The air conditioner provides heating efficiency even at low outdoor temperatures.



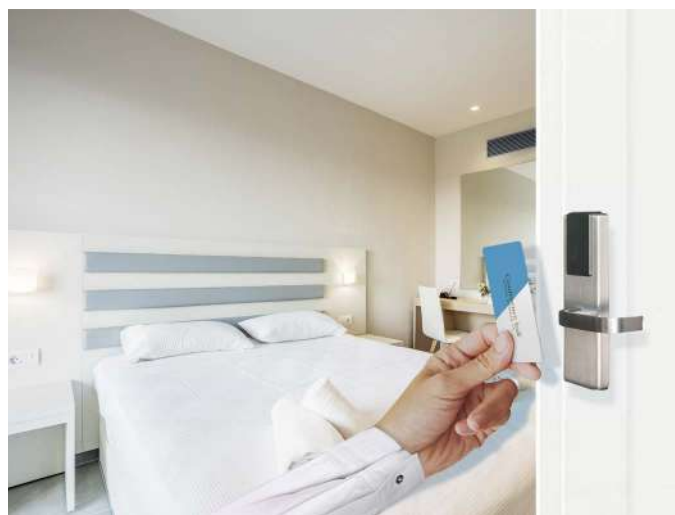
CAV flow control

Nevo ducted splits offer the ability to adjust and maintain a constant airflow. The unit operates within the 0-160 Pa differential pressure range (models ranging from 7,0 kW to 15,3 kW).



Alarm output

This feature allows the unit to be controlled by external alarm systems or air conditioner monitoring systems.



ON/OFF remote output

The Nevo air conditioner provides the convenience of remotely switching the unit on or off. This can be achieved through various means, such as using a switch connected to the built-in output on the indoor unit's motherboard.



External static pressure (ESP) up to 160 Pa

The advanced and efficient design of the Nevo air conditioner allows for pressure of up to 160 Pa (for models ranging from 7,0 kW to 15,3 kW).

Zone management for Nevo conditioner



CPCC dampers

Zone control

AIRZONE allows independent temperature regulation in each room, running thermostats that work smoothly with dampers equipped with reliable fail-safe control actuators.

Furthermore, each thermostat includes a relative humidity sensor. The AIRZONE can be integrated with the heating system by controlling thermoelectric heads.

CPCC dampers

These circular ducts, equipped with dampers and 12 V motor drives, enable airflow control for each zone. The dampers are available in three different diameters: 125 mm, 160 mm, and 200 mm.



LITE thermostat

18°



LITE thermostat

Off



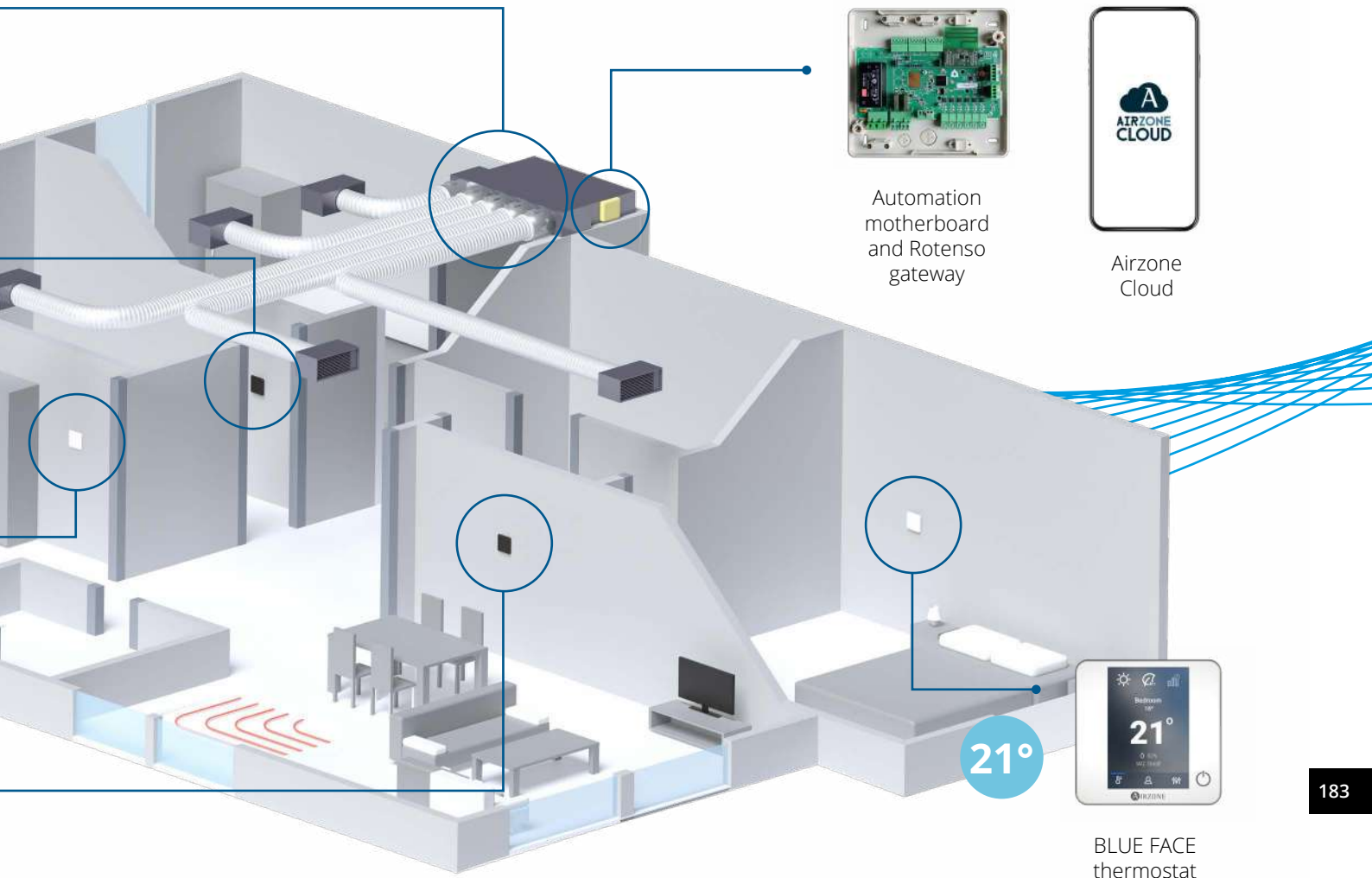
THINK thermostat

23°

AIR
ZONE

Independent temperature control

Each zone is equipped with one of the three available touch-controlled thermostats: BLUEFACE, THINK, or LITE. Each of them offered in both white and black colours. Additionally, the THINK and LITE models are available in a wireless version.



Automation motherboard and Rotenso gateway



Airzone Cloud



BLUE FACE thermostat

THINK thermostat

BLUE FACE thermostat



Wired master thermostat with 3.5" colour touchscreen display.



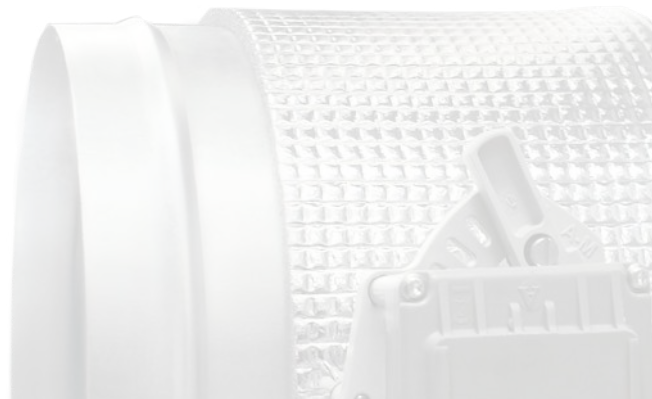
Wireless master thermostat with touchscreen e-paper display.

LITE thermostat



Wired or wireless simple zone temperature control thermostat, no display, $\pm 3^{\circ}\text{C}$.

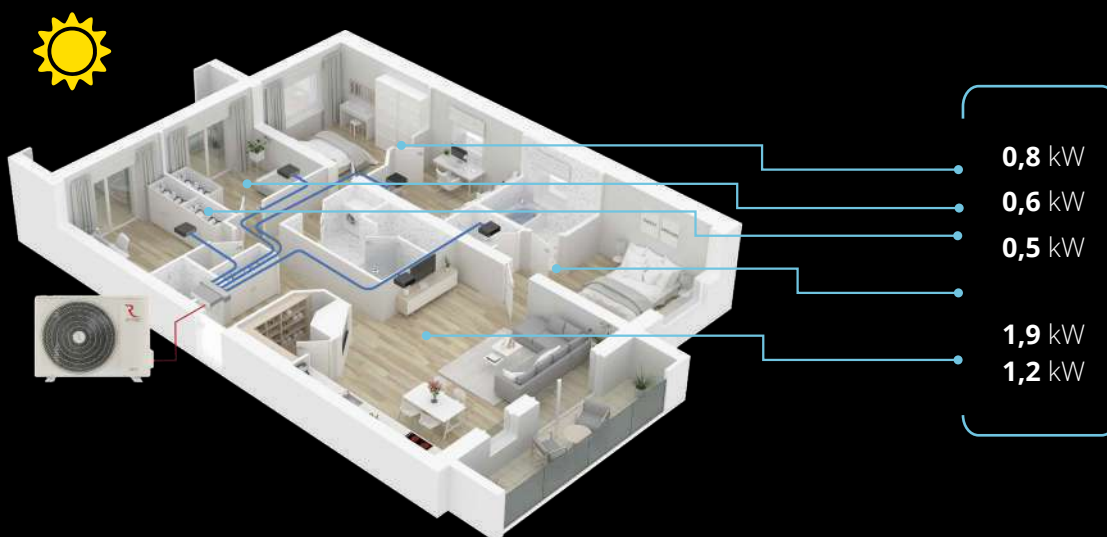
Zone management with **Nevo air conditioner**



Nevo ducted units in the SINGLE system AIRZONE

- Neat and minimalist solution which requires no installation of indoor equipment.
- Centralised maintenance.
- Air conditioner power precisely adjusted to heating and cooling demand.

184

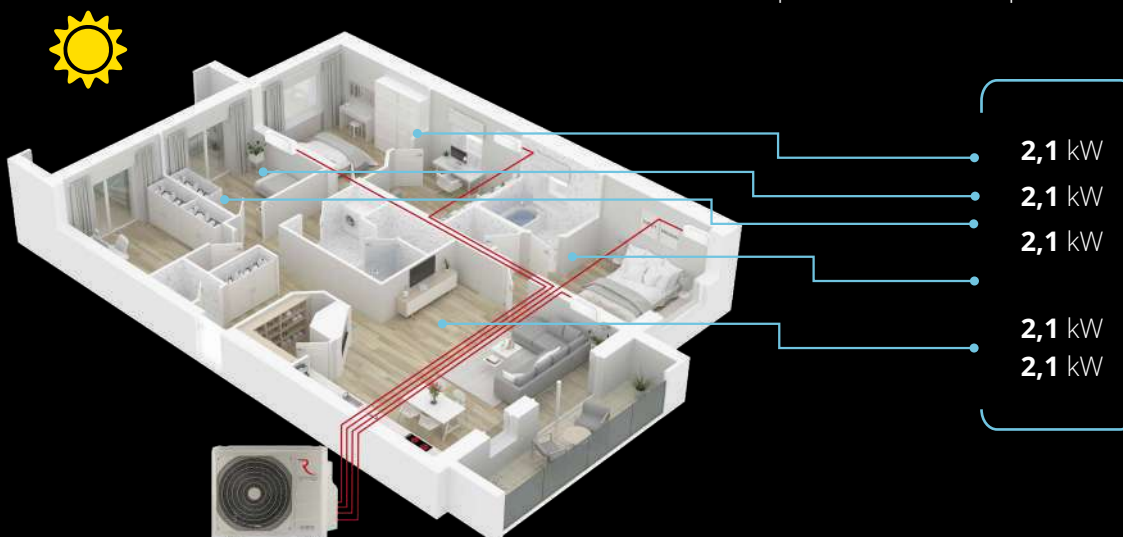


5 kW

The power of the indoor unit is precisely matched to meet the total aggregate power demand.

Wall-mounted units w the MULTI system

- Equipment with capacity over demand.
- Increased energy consumption.
- Requires more indoor units.
- Requires additional space.



10,5 kW

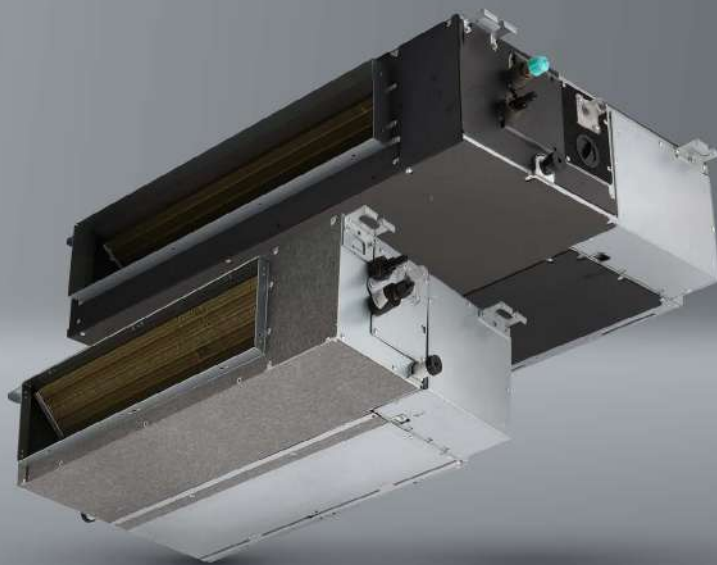
Minimum power of the indoor units exceeds the actual demand.

Nevo

2,1 -15,2 kW



- SCOP 4,0
- 20°C
- 5 year WARRANTY
- PZH CERTIFICATE



Unit features

SKY inverter Digital DC Inverter SKY®	Automatic purification iClean ⁽¹⁾⁽²⁾	Electrostatic HD iAIR filter	Turbo eMOTO mode ⁽¹⁾	Wide-angle eMOTO air supply	Air supply eMOTO control system	Eco eMOTO mode ⁽¹⁾⁽²⁾	SMART wi-fi ⁽²⁾
Wired controller SMART port	Wireless remote control ⁽²⁾	Wired controller	SMART Follow mode	SMART heating to 8°C ⁽¹⁾⁽²⁾	Autorestart memory	Anti-corrosive gold fins	Drip tray heater
Compressor crankcase heater	Silence mode	Timer	Cooling at low outdoor temp. down to -15°C	Heating at low outdoor temp. down to -20°C	Double-sided condensate drainage	Self-diagnostics	Sleep mode ⁽²⁾
Integrated condensate pump	Fresh air supply ⁽²⁾	ON/OFF remote output	Alarm output	Weekly controller output	Central controller output	Adjustable static pressure	Additional air supply
Synchro-simultaneous operation ⁽²⁾	BMS Modbus ⁽²⁾	BMS Bacnet ⁽²⁾	Air inlet in the back / from down	Remote controller IrDA receiver			

1. Feature not available in Multi Split system. 2. Feature is only optional.

Technical specification

Model				Nevo 2,1 kW	Nevo 2,6 kW	Nevo 3,5 kW	Nevo 5,3 kW	Nevo 7,0 kW
Capacity	Cooling	Nom. (Min. - Max.)	W	2051	2638	3517 (528-3988)	5275 (2550-5861)	7034 (3276-8156)
Rated input		Nom. (Min. - Max.)	W	-	-	1053 (155-1373)	1530 (710-2150)	2190 (750-2960)
Operating current		Nom. (Min. - Max.)	A	-	-	4,6 (0,7-6,0)	6,7 (3,1-9,3)	9,5 (3,3-12,9)
Capacity	Heating	Nom. (Min. - Max.)	W	2345	2931	3810 (996-4389)	5868 (2198-6154)	7620 (2808-8486)
Rated input		Nom. (Min. - Max.)	W	-	-	1038 (302-1390)	1510 (740-1760)	1900 (640-2580)
Operating current		Nom. (Min. - Max.)	A	-	-	4,5 (1,3-6,0)	6,6 (3,2-7,7)	8,3 (2,8-11,2)
Reversible heat pump type				air-to-air	air-to-air	air-to-air	air-to-air	air-to-air
Design load in cooling mode			kW	-	-	3,5	5,4	7,1
SEER			W/W	-	-	6,3	6,5	6,2
Energy efficiency class, cooling				-	-	A++	A++	A++
Annual electric energy consumption, cooling			kWh/a	-	-	197	291	401
Design load in heating mode (T _{biv} -7°C)			kW	-	-	2,7	4,3	5,4
SCOP			W/W	-	-	4,0	4,0	4,0
Energy efficiency class, heating				-	-	A+	A+	A+
Annual electric energy consumption, heating			kWh/a	-	-	945	1505	1890
Dehumidification			l/h	-	-	1,2	1,9	2,5
Maximum energy consumption			W	-	-	1850	2950	3700
Maximum operating current			A	-	-	8	12,8	16,1
Indoor unit				N21Xi	N26Xi	N35Xi	N50Xi	N70Xi
EAN product code				5905567601873	5905567601880	5905567601897	5905567601903	5905567601910
Fan speed	T / H / M / L	rpm	1080 / 920 / 790 / 650	1080 / 920 / 790 / 650	1080 / 904 / 820 / 736	1192 / 1032 / 948 / 864	880 / 800 / 760 / 720	
Air flow	T / H / M / L	m³/h	500 / 340 / 230 / 170	500 / 340 / 230 / 170	600 / 480 / 390 / 300	911 / 706 / 611 / 515	1229 / 1035 / 930 / 825	
Sound pressure level	T / H / M / L	dB(A)	40 / 34 / 27 / 24	40 / 34 / 27 / 24	34,5 / 32 / 30 / 23	42 / 39 / 35 / 26	49 / 46 / 41 / 27	
Sound power level		dB(A)	56	56	58	58	62	
Rated input		W	170	180	62	200	200	
Operating current		A	0,7	0,8	0,3	0,9	0,9	
ESP - external static pressure	Standard	Pa	25	25	25	25	25	
	Range	Pa	0 - 40	0 - 40	0 - 60	0 - 100	0 - 160	
Net dimensions		W × D × H	mm	700 × 450 × 200	700 × 450 × 200	700 × 450 × 200	880 × 674 × 210	1100 × 774 × 249
Gross dimensions		W × D × H	mm	860 × 540 × 275	860 × 540 × 275	860 × 540 × 285	1070 × 725 × 280	1305 × 805 × 315
Net weight / Gross weight		kg	18 / 22	18 / 22	17,8 / 21,5	24,4 / 29,6	32,3 / 39,1	
Condensate drain		mm	25	25	25	25	25	
Outdoor unit				-	-	UO35Xo	UO50Xo	UO70Xo
EAN product code				-	-	5905567601545	5905567601552	5905567601569
Fan speed	H / M / L	rpm	-	-	780 / 690 / 600	760 / 705 / 650	800 / 700 / 580	
Maximum air flow		m³/h	-	-	2200	2100	3500	
Sound pressure level		dB(A)	-	-	54	56	61	
Sound power level		dB(A)	-	-	62	65	68	
Net dimensions		W × D × H	mm	-	765 × 303 × 555	805 × 330 × 554	890 × 342 × 673	
Gross dimensions		W × D × H	mm	-	887 × 337 × 610	915 × 370 × 615	995 × 398 × 740	
Bracket spacing		W × D	(mm)	-	452 × 286	511 × 317	663 × 348	
Net weight / Gross weight		kg	-	-	26,6 / 29,0	32,5 / 35,2	43,9 / 46,9	
Refrigerant	Type		-	-	R32	R32	R32	
	GWP		-	-	675	675	675	
	≤ 5m	kg	-	-	0,72	1,15	1,5	
		TCO ₂ eq	-	-	0,49	0,78	1,01	
Charged (> 5m)		g/mb	-	-	12	12	24	
Pipe connections		Liquid/Gas	mm (inches)	Φ6,35 / Φ9,52 (1/4" / 3/8")	Φ6,35 / Φ9,52 (1/4" / 3/8")	Φ6,35 / Φ9,52 (1/4" / 3/8")	Φ6,35 / Φ12,7 (1/4" / 1/2")	Φ9,52 / Φ15,9 (3/8" / 5/8")
Maximum installation length		m	-	-	25	30	50	
Maximum height difference		m	-	-	10	20	25	
Compressor type				-	-	Rotary DC	Rotary DC	Rotary DC
Type of outdoor unit power supply		V-Hz, Ø	220-240-50, 1f	220-240-50, 1f	220-240-50, 1f	220-240-50, 1f	220-240-50, 1f	
Electrical protection		A	-	-	C10	C16	C16	
Power cables: outdoor unit		pcs × mm²	Look data at HIRO	Look data at HIRO	3 × 1,5	3 × 2,5	3 × 2,5	
Control and power cables: indoor unit - outdoor unit		pcs × mm²	4 × 1	4 × 1	4 × 1	4 × 1	4 × 1	
Indoor operating range (cooling / heating)		°C	16-32 / 0-30	16-32 / 0-30	16-32 / 0-30	16-32 / 0-30	16-32 / 0-30	
Outdoor operating range (cooling / heating)		°C	-	-	-15-50 / -20-24	-15-50 / -20-24	-15-50 / -20-24	
Compatible systems								
1:1 SINGLE						●	●	●
1:2 DUAL						●	●	●
1:X MULTI				●	●	●	●	●

T - Turbo; H - High; ML - Middle; L - Low

For N70Xi (pipe connections: Ø9.52 (3/8") | Ø15.9 (5/8")) in MULTI system outdoor unit reduction necessary to Ø6.35 (1/4") | Ø12.7 (1/2")

Technical specification

Model				Nevo 8,8 kW	Nevo 10,6 kW	Nevo 12,0 kW	Nevo 14,1 kW	Nevo 15,2 kW
Capacity	Cooling	Nom. (Min. - Max.)	W	8792 (2227-9847)	10551 (2726-11781)	12016 (2931-12309)	14067 (3517-15533)	15240 (4103-17291)
Rated input		Nom. (Min. - Max.)	W	2500 (190-3050)	4000 (890-4200)	4200 (680-4500)	4800 (880-6000)	5250 (1030-6650)
Operating current		Nom. (Min. - Max.)	A	10,9 (0,8 -13,3)	6,8 (1,5-7,1)	18,3 (3,0-19,6)	8,1 (1,5-10,1)	8,9 (1,7-11,2)
Capacity	Heating	Nom. (Min. - Max.)	W	9378 (2696-10023)	11723 (2784-12836)	13481 (3370-14067)	16119 (4103-18170)	18170 (4396-20515)
Rated input		Nom. (Min. - Max.)	W	2250 (430-2450)	3250 (780-4000)	3450 (750-4100)	4500 (950-5700)	5150 (950-6600)
Operating current		Nom. (Min. - Max.)	A	9,8 (1,9-10,7)	5,5 (1,3-6,8)	15,0 (3,3-17,8)	7,6 (1,6-9,6)	8,7 (1,6-11,1)
Reversible heat pump type				air-to-air	air-to-air	air-to-air	air-to-air	air-to-air
Design load in cooling mode			kW	8,8	10,6	12,1	14	15,3
SEER			W/W	6,5	6,1	6,1	6,1	6,1
Energy efficiency class, cooling				A++	A++	A++	A++	A++
Annual electric energy consumption, cooling			kWh/a	474	608	700	812	900
Design load in heating mode (T _{biv} -7°C)			kW	8,0	8,8	9,5	11,5	12,5
SCOP			W/W	4,0	4,0	4,0	3,8	4,0
Energy efficiency class, heating				A+	A+	A+	A	A+
Annual electric energy consumption, heating			kWh/a	2800	3080	3350	4323	4390
Dehumidification			l/h	3,0	3,8	4,2	5,1	5,8
Maximum energy consumption			W	4500	5000	5000	6900	7500
Maximum operating current			A	19,5	8,4	8,4	11,6	12,7
Indoor unit				N90Xi	N100Xi	N120Xi	N140Xi	N160Xi
EAN product code				5905567601927	5905567601934	5905567601941	5905567601958	5905567601965
Fan speed	T / H / M / L	rpm	1100 / 1000 / 950 / 900	1100 / 1000 / 950 / 900	1020 / 800 / 700 / 600	1020 / 800 / 700 / 600	1060 / 970 / 938 / 905	
Air flow	T / H / M / L	m³/h	2100 / 1800 / 1650 / 1500	2100 / 1800 / 1650 / 1500	2400 / 2040 / 1860 / 1680	2400 / 2040 / 1860 / 1680	2600 / 2210 / 2015 / 1820	
Sound pressure level	T / H / M / L	dB(A)	50,5 / 48 / 46 / 40,5	50,5 / 49 / 47 / 42,5	51,5 / 49 / 48 / 43	51,5 / 49 / 47 / 42	52,5 / 49 / 47 / 40	
Sound power level		dB(A)	64	61	67	66	66	
Rated input		W	350	380	560	560	560	
Operating current		A	1,5	1,7	2,4	2,3	2,4	
ESP - External static pressure	Standard	Pa	37	37	50	50	50	
	Range	Pa	0 - 160	0 - 160	0 - 160	0 - 160	0 - 160	
Net dimensions		W × D × H	mm	1360 × 774 × 249	1360 × 774 × 249	1200 × 874 × 300	1200 × 874 × 300	1200 × 874 × 300
Gross dimensions		W × D × H	mm	1570 × 805 × 330	1570 × 805 × 330	1405 × 915 × 365	1405 × 915 × 365	1405 × 915 × 365
Net weight / Gross weight		kg	40,5 / 48,2	40,5 / 48,2	47,6 / 55,8	47,6 / 55,8	47,4 / 56,1	
Condensate drain		mm	25	25	25	25	25	
Outdoor unit				UO90Xo	UO100Xo	UO120Xo	UO140Xo	UO160Xo
EAN product code				5905567601576	5905567601583	5905567601590	5905567601606	5905567601613
Fan speed	H / M / L	rpm	900 / 750 / 550	950 / 850 / 700	950 / 850 / 750	830 / 740 / 650	830 / 740 / 650	
Maximum air flow		m³/h	3800	4000	4000	7500	7500	
Sound pressure level		dB(A)	62	62	64	65	65	
Sound power level		dB(A)	70	70	75	74	74	
Net dimensions		W × D × H	mm	946 × 410 × 810	946 × 410 × 810	946 × 410 × 810	952 × 415 × 1333	952 × 415 × 1333
Gross dimensions		W × D × H	mm	1090 × 500 × 885	1090 × 500 × 885	1090 × 500 × 885	1095 × 495 × 1480	1095 × 495 × 1480
Bracket spacing		W × D	(mm)	673 × 403	673 × 403	673 × 403	634 × 404	634 × 404
Net weight / Gross weight		kg	52,8 / 57,3	75,5 / 80	71,0 / 75,0	103,7 / 118,3	107,0 / 121,2	
Refrigerant	Type		R32	R32	R32	R32	R32	
	GWP		675	675	675	675	675	
	≤ 5m	kg	2,0	2,4	2,8	2,9	3,0	
		TCO ₂ eq	1,35	1,62	1,89	1,96	2,03	
Charged (> 5m)		g/mb	24	24	24	24	24	
Pipe connections		Liquid/Gas	mm (inches)	Φ9,52 / Φ15,9 (3/8" / 5/8")	Φ9,52 / Φ15,9 (3/8" / 5/8")	Φ9,52 / Φ15,9 (3/8" / 5/8")	Φ9,52 / Φ15,9 (3/8" / 5/8")	Φ9,52 / Φ15,9 (3/8" / 5/8")
Maximum installation length		m	50	75	75	75	75	
Maximum height difference		m	25	30	30	30	30	
Compressor type				Rotary DC	Rotary DC	Rotary DC	Rotary DC	Rotary DC
Type of outdoor unit power supply		V-Hz, Ø	220-240-50, 1f	380-420-50, 3f	380-420-50, 3f	380-420-50, 3f	380-420-50, 3f	380-420-50, 3f
electrical protection		A	C20	C10/3	C16/3	C16/3	C16/3	
Power cables: outdoor unit		pcs × mm²	3 × 2,5	5 × 2,5	5 × 2,5	5 × 2,5	5 × 2,5	
Control and power cables: indoor unit - outdoor unit		pcs × mm²	4 × 1	4 × 1	4 × 1	4 × 1	4 × 1	
Indoor operating range (cooling / heating)		°C	16-32 / 0-30	16-32 / 0-30	16-32 / 0-30	16-32 / 0-30	16-32 / 0-30	
Outdoor operating range (cooling / heating)		°C	-15-50 / -20-24	-15-50 / -20-24	-15-50 / -20-24	-15-50 / -20-24	-15-50 / -20-24	
Compatible systems								
1:1 SINGLE				•	•	•	•	•
1:2 DUAL				•				
1:X MULTI								